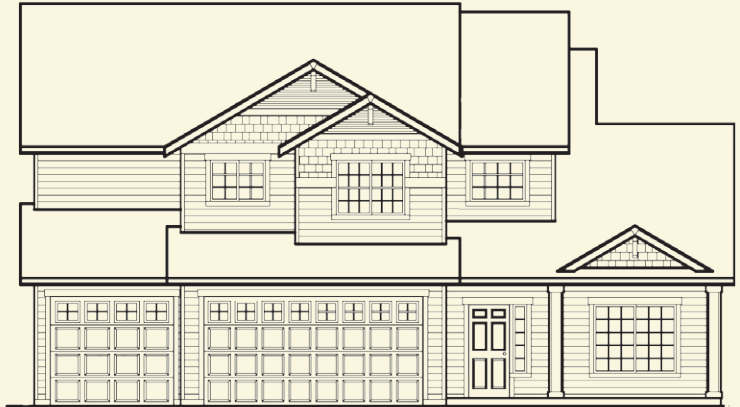
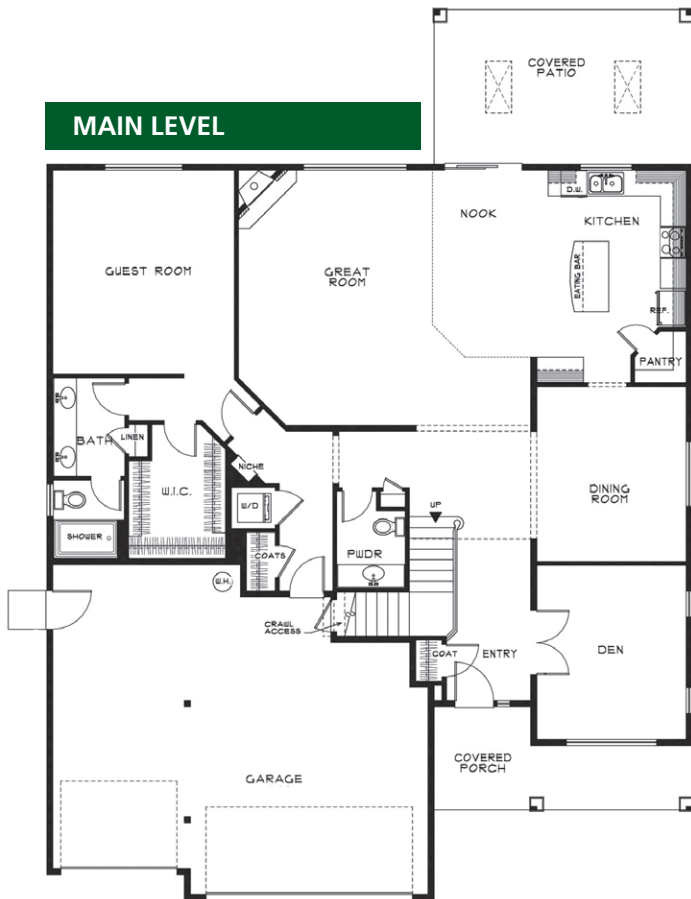


HOME DESIGN FEATURES

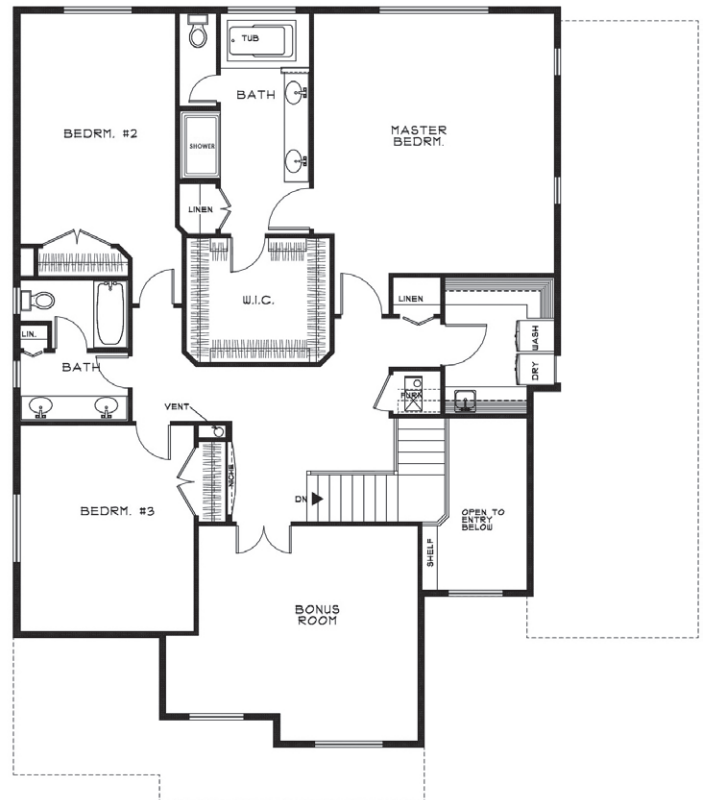
- 3,653 sf. Total Living
- 4 Bedrooms & 3.5 Bathrooms
- Junior Master Suite on Main Level
- Hardwood Floors Throughout Main Level
- Covered Back Patio
- Office / Den on Main Level
- 5-piece Master Bath with Tiled Shower and Walk-in Closet
- Large Upper Level Laundry
- 3-Car Garage



MAIN LEVEL



UPPER LEVEL



Please Note: This is a Pioneer Pacific Homes community. In a continuous effort to balance market demands for quality and affordability, Pioneer Pacific Homes reserves the right to change plan specifications, prices and availability without notice. Some features are available only per plan.

