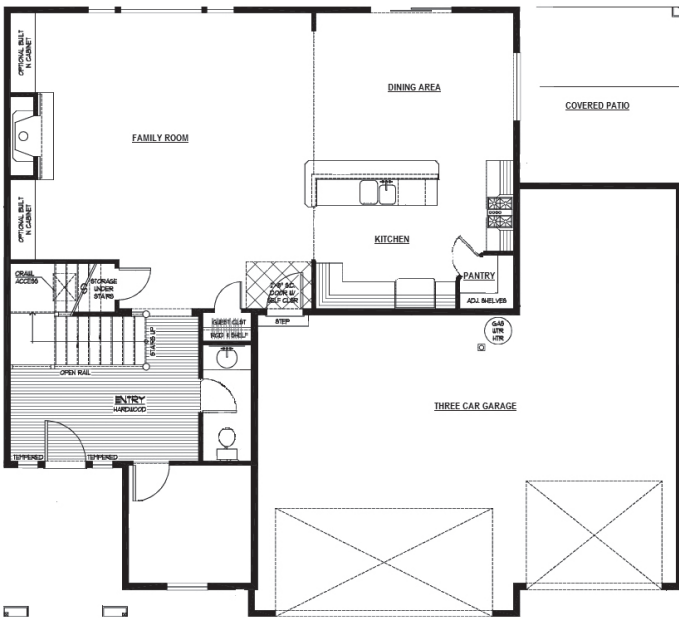




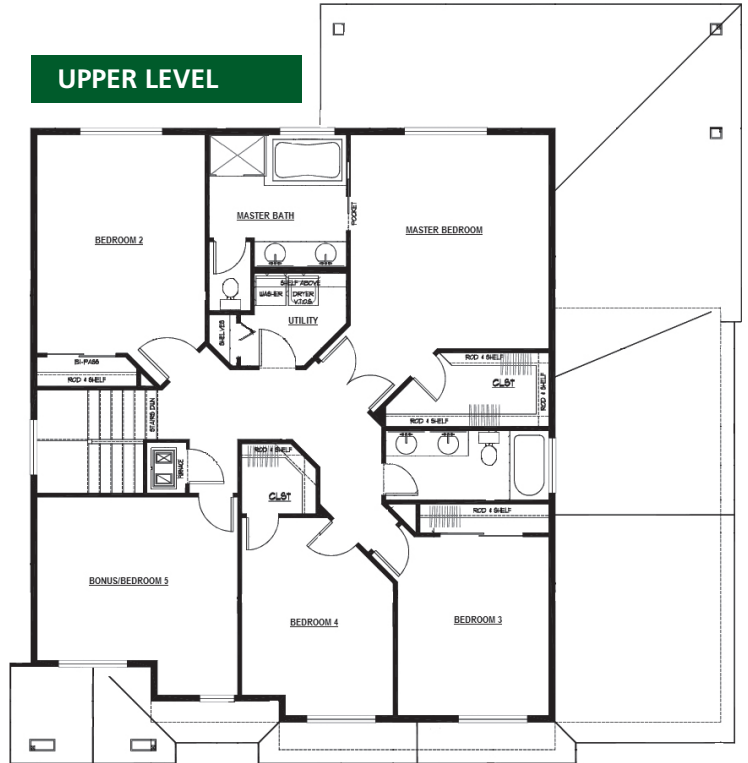
HOME DESIGN FEATURES

- 2,680 sf. Total Living
- 4 Bedrooms + Bonus & 2.5 Bathrooms
- 5 Bedrooms on Upper Level or 4 Plus Bonus
- Hardwood Floors in Entry & Kitchen/Dining Rooms
- Office/Den on Main Level
- Covered Back Patio
- 5-piece Master Bath with Tiled Shower and Walk-in Closet
- 3-Car Garage

MAIN LEVEL



UPPER LEVEL



Please Note: This is a Pioneer Pacific Homes community. In a continuous effort to balance market demands for quality and affordability, Pioneer Pacific Homes reserves the right to change plan specifications, prices and availability without notice. Some features are available only per plan.

