



Homes Built for Generations.

# The Madison

8820 29th Street Court E . Edgewood, WA

**Huge Price Reduction!**

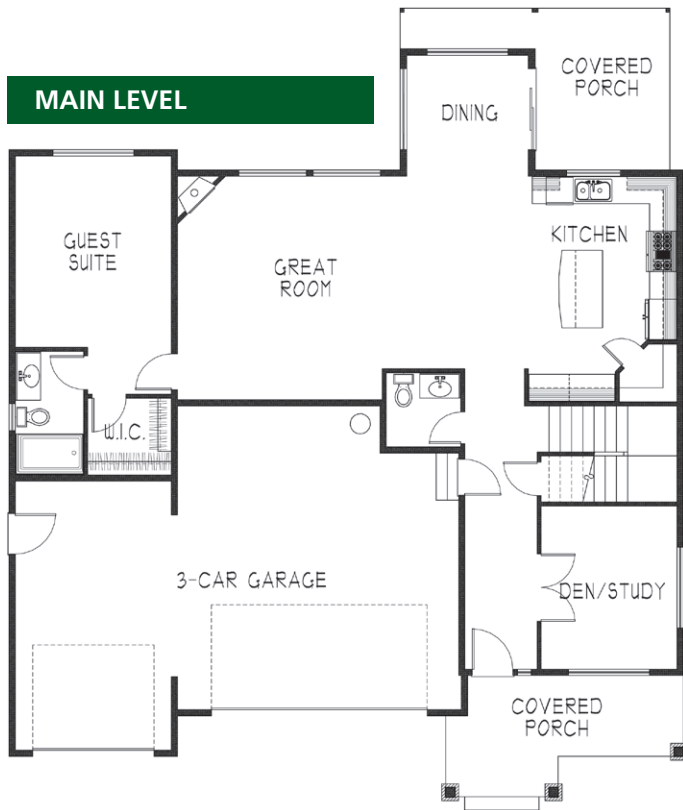
**PRICE . \$499,950**



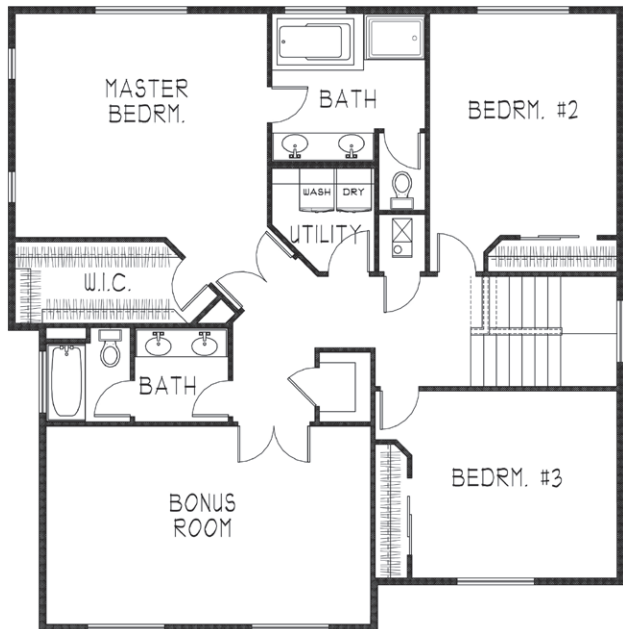
## HOME DESIGN FEATURES

- 2,878 sf. Total Living
- 4 Bedrooms & 3.5 Bathrooms
- Junior Master Suite on Main Level
- Hardwood Floors Throughout Main Level
- Covered Back Deck
- Separate Den / Study
- 5-Piece Master Bath with Tiled Shower and Walk-in Closet
- Upper Level Laundry
- 3-Car Garage

### MAIN LEVEL



### UPPER LEVEL



Last Updated . February 9, 2016



*Please Note: This is a Pioneer Pacific Homes community. In a continuous effort to balance market demands for quality and affordability, Pioneer Pacific Homes reserves the right to change plan specifications, prices and availability without notice. Some features are available only per plan.*



[PIONEERPACIFICNW.COM](http://PIONEERPACIFICNW.COM)

FOR MORE INFORMATION  
Nancy Williams, Realtor  
Direct. (253) 306-7649

**John L. Scott** Puyallup Office  
REAL ESTATE Office REALTOR